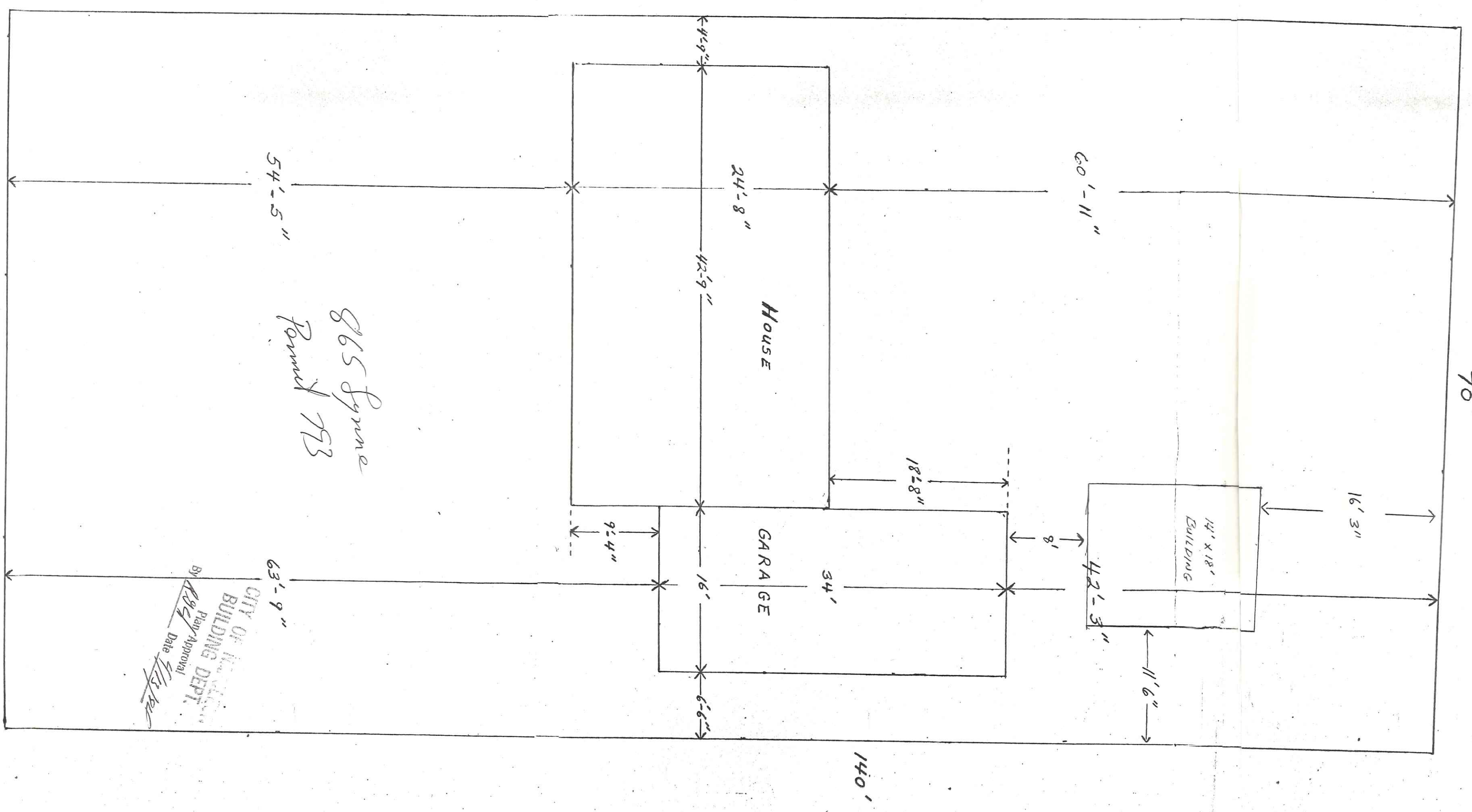


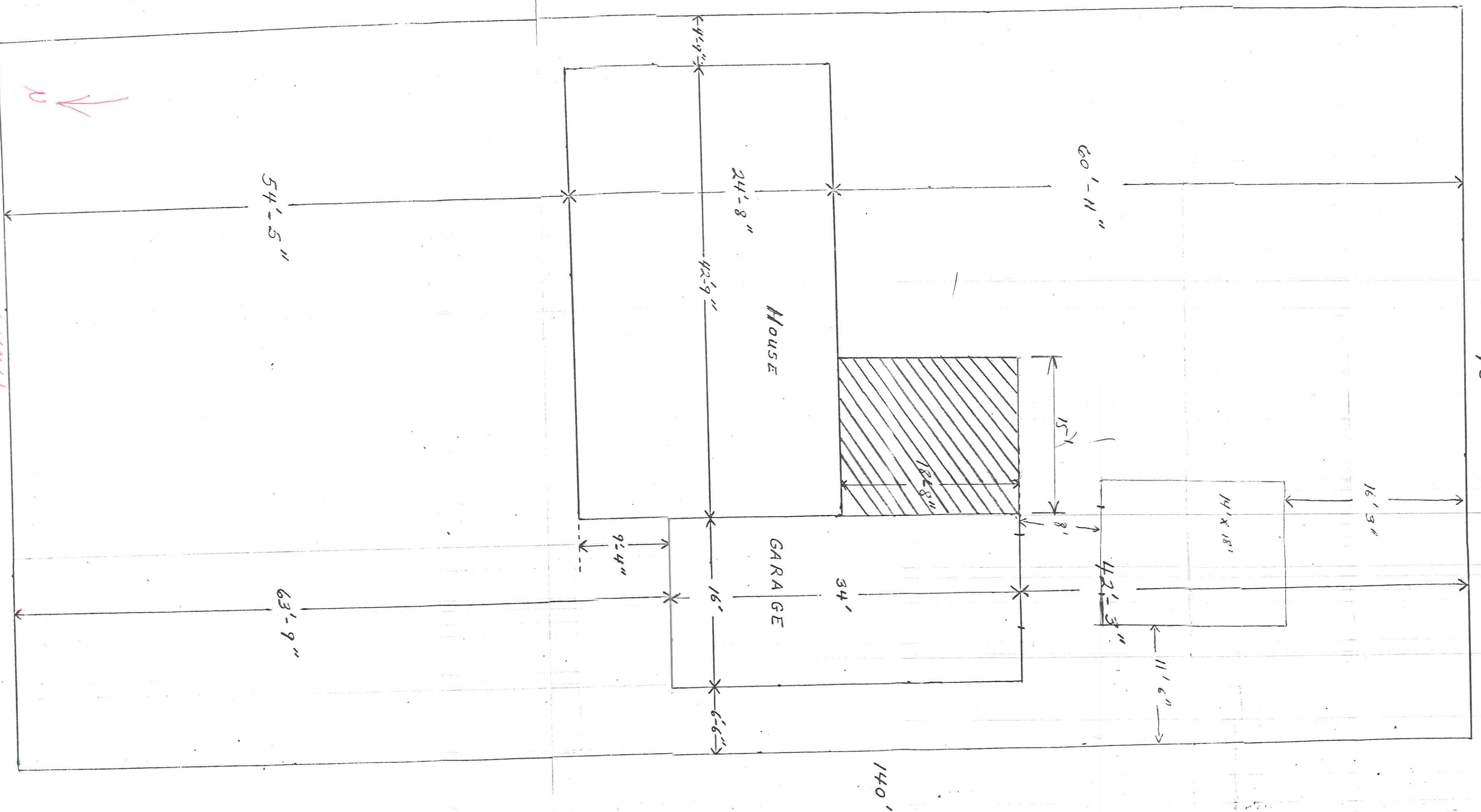
LOT ----- 9800 sq. Ft.  
 HOUSE ----- 1054.2 Sq. Ft.  
 GARAGE ----- 544 sq. Ft.  
 HOUSE + GARAGE ----- 1598.2 Sq. Ft.  
 $\frac{1}{8}'' = 1'$



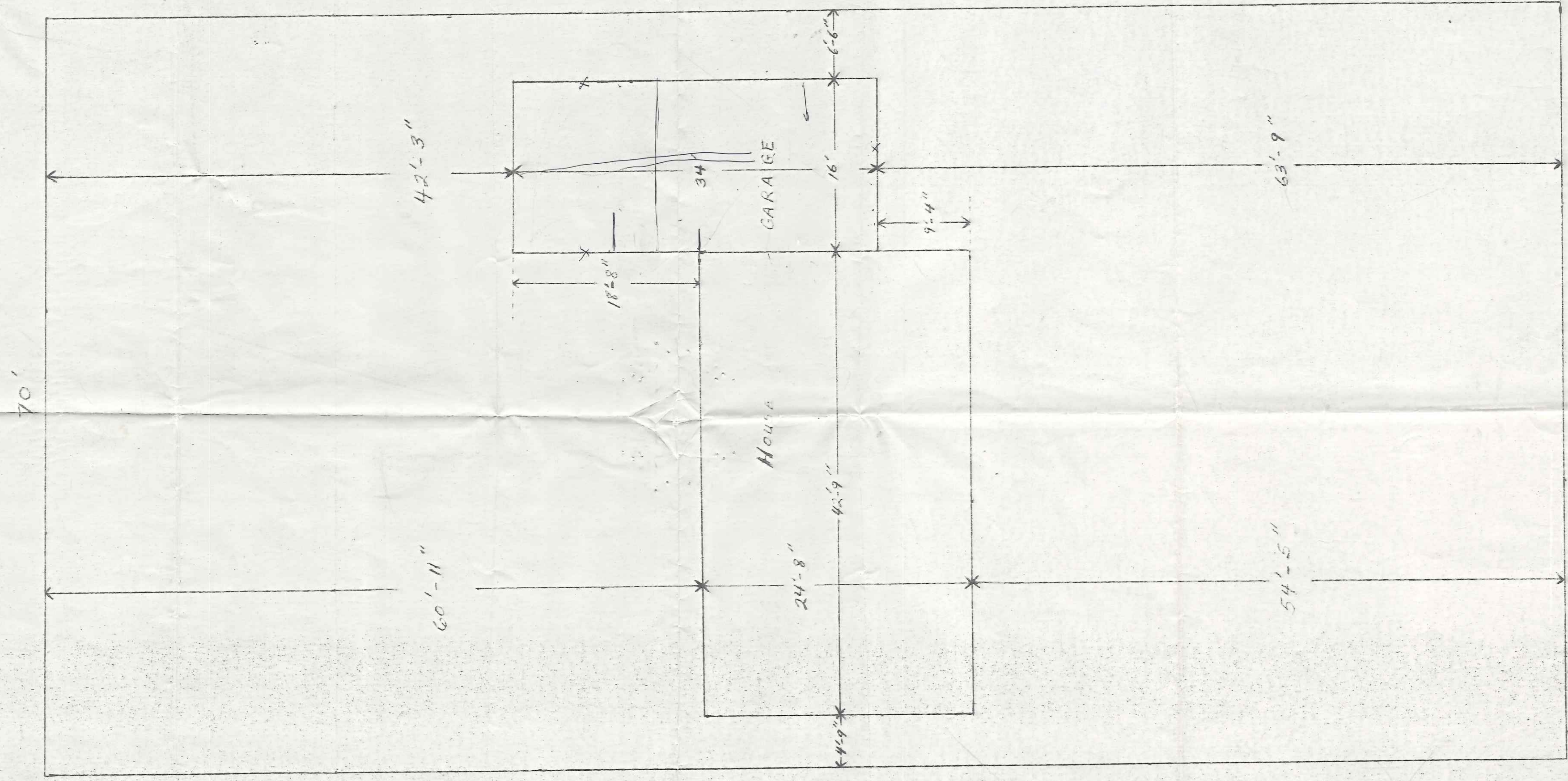
865 Lynne  
 Form # 793

CITY OF HOUSTON  
 BUILDING DEPT.  
 Plan Approval  
 By: *KRS*  
 Date: *4/15/02*

LOT - - - - - 9800 sq. Ft.  
 HOUSE - - - - - 1054.2 sq. Ft.  
 GARAGE - - - - - 544 sq. Ft.  
 HOUSE + GARAGE - - - - - 1598.2 sq. Ft.  
 $\frac{1}{8}'' = 1'$



Lot --- 9,800 Sq Ft  
 House --- 10,542 Sq Ft  
 Garage --- 544 Sq Ft  
 House + Garage --- 15,982 Sq Ft  
 1" = 1'



5/19/07